

Dry Ice Production

ASCO Dry Ice Pelletizer P15

part no. 901520



The **ASCO** Dry Ice Pelletizer P15 is a compact and powerful dry ice machine. Having an adjustable production capacity of 100 - 150 kg/h (220 - 331 lb/h) it meets the demands for higher dry ice quantities plus quality and flexibility in the daily working process.

Performance you can see. Not hear!
Maximum efficiency, reduced noise level and even more user-friendliness - the EVO-Series sets new standards in dry ice production. Experience the combination of innovative product features and proven **ASCO** quality!

Designed for maximum performance and ease of use, the EVO-Series stands out with sophisticated features that make dry ice production more user-friendly than ever. From an innovative quick-locking system and a closed housing with a condensate drainage system to minimized noise emissions averaging 65 dB(A) - every detail is engineered for optimal efficiency. Upgrade your production with the latest technology.

To maximise the CO₂ to dry ice conversion ratio the dry ice pelletizer can be connected to an **ASCO** Revert Gas Recovery System.

Benefits of an in-house dry ice production:

- more efficient cleaning results, because the fresher the dry ice, the more efficient the cleaning
- shorter production stops
- reduction of dry ice lost due to sublimation
- decreased logistics expense connected with purchasing and disposing of dry ice

Specifications

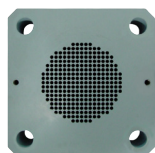
Production capacity:	100 - 150 kg/h \pm 5 % at min. 17 bar LCO ₂ inlet pressure (232 - 261 psi) CO ₂ inlet pressure
Voltage:	400 VAC \pm 5 % / 50 Hz / 3 Ph + PE (other voltages and frequencies on request)
Max. power consumption:	5.5 kW (7.4 HP)
Max. fuse:	25 A
Short circuit current I _{cp} :	6 kVA
Dimensions (L x W x H):	1560 x 800 x 1510 mm (without signal column) - (61 x 31 x 59 in) 1560 x 800 x 2190 mm (with signal column) - (61 x 31 x 86 in)
Noise level during operation:	average 65 dB(A) / permanently below 70 dB(A)
Ambient temperature:	+5 °C to +40 °C
Weight net:	440 kg (970 lb) (without hydraulic oil) 550 kg (1'100 lb) (with hydraulic oil)
Weight packed:	approx. 600 kg (1'323 lb) (without hydraulic oil)
CO ₂ inlet connection (liquid):	1" BSP female thread
CO ₂ source (liquid):	CO ₂ storage tank 16-18 bar / pressure fluctuation over 8 hours max. 1 bar
CO ₂ outlet connection (revert gas):	2" BSP female thread
CO ₂ exhaust back pressure:	0.5 bar
Connectivity and remote access:	LAN, WiFi, 4G

ASCO Dry Ice Pelletizer P15: Function and applications

The **ASCO** Dry Ice Pelletizer P15 requires a liquid CO₂ supply (pressure 16 - 18 bar) (232 - 261 psi) and power supply of 400 V / 50 Hz / 3 Ph + PE (other voltages available on request). The machine features instant push button start and all functions are controlled by an inbuilt PLC. Dry ice snow is produced in the injection chamber, pressed and then extruded by a powerful hydraulic unit. Hard, dense dry ice pellets are produced shortly after pushing the start button.

To ensure continuous, reliable operation of the pelletizer, oil temperature, oil level, cycle time, injection time, operation hours, due date of service, motor overload, amount dry ice produced since last start, CO₂ inlet pressure and hydraulic pressure are all monitored and displayed on the touch screen of the P15's PLC.

Pellet size	 1.7 mm (1/16 ")	 3 mm (1/8 ")	 10 mm (3/8 ")	 16 mm (5/8 ")
Operating range	Dry Ice Blasting (structured surfaces)	Dry Ice Blasting	Cooling purposes	Cooling purposes



Extruder plate for 3 mm (1/8 ") pellets

The dry ice pelletizer P15i-D3 is standardly equipped with an extruder plate for pellets with a diameter of 3 mm (1/8 ").

ASCO Dry Ice Pelletizer P15: Key features

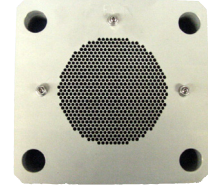
- **Compact and closed housing** - enables easy service access through integrated quick-lock elements and recessed handles. Emissions such as condensate, gas leaks and noise are minimized by the newly developed design.
- **Hydraulic power unit** - the redesigned hydraulic unit with internal drive gear further reduces noise and ensures long-lasting efficient performance.
- **State-of-the-art control and remote maintenance technology** - the intuitive software combined with state-of-the-art hardware ensures easy operation and remote maintenance and offers predefined interfaces for conveyor belts, gas detectors, packaging machines and downstream production systems such as the ASCO Reformer R70i.
- **Noise level reduction** - the pelletizer produces at an average volume of 65 decibels. It works effectively and quietly, makes it easier to comply with noise protection regulations and improves working conditions for employees.
- **Integrated production quantity control** - continuous adjustment of the production quantity between 100-150kg/h. With a Favorites function for frequent production quantities.
- **Smart-Signal** - the four-color signal light with integrated warning siren makes it easy to check the current operating status, even from a distance. The standardized color scheme allows a distinction to be made between "production", "ready for operation", "fault" or "input request".
- **Minimum floor space for high production performance** - due to the compact design, dry ice production can be implemented even in limited space conditions.

ASCO Dry Ice Pelletizer P15-D3: Standard scope of delivery

Extruder plate for 3 mm (1/8 ") pellets

Pellets for **blasting** purposes

part no. 4044250



i-Series

Enables remote access and data services via LAN, WiFi, 4G.



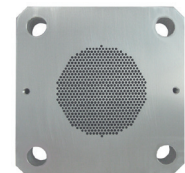
ASCO Dry Ice Pelletizer P15i-D3: Options

Pos. 001

Extruder plate for 1.7 mm (1/16 ") pellets

Pellets for **blasting** purposes

part no. 4068115

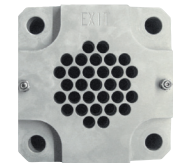


Pos. 002

Extruder plate for 10 mm (3/8 ") pellets

Pellets for **cooling** purposes

part no. 4044255



Pos. 003

Extruder plate for 16 mm (5/8 ") pellets

Pellets for **cooling** purposes

part no. 4044253



Pos. 004

Spare parts kit

Includes a recommended selection of spare parts to ensure constant operation.

part no. 4071375



sample image

Pos. 005

Connecting kit 1" P15/P28 Stainless Steel

For flexible connection to LCO₂ lines.

Lenght: 1.5 m

part no. 4071343

