

Dry Ice Production

ASCO Dry Ice Pelletizer P75i

part no. 901154



The Pelletizer P75i is the most powerful model in the range of **ASCO i-Series dry ice production machines**. At ASCO, i-Series stands for interconnected production. Be it for quick and efficient trouble shooting and maintenance or for gathering of production and performance data - the i-Series offers a wide range of options to link industry 4.0 dry ice production to industry 4.0.

The P75i is the workhorse among the ASCO dry ice pelletizers with a **production capacity of 750 kg/h (1'653 lb/h)**. It is built for long-term operation incorporating a heavy duty type hydraulic system controlled by an integrated PLC with touch screen interface. Fully automatic control of oil temperature and dry ice snow production process guarantees continuous dry ice production without any supervision right from the beginning.

By default, the P75i operates with a low noise level and can be optionally equipped with an automatic extruder plate changer. Simply change the production from one set pellet size to another size at the push of a button.

To maximise the CO₂ to dry ice conversion ratio the dry ice pelletizer can be connected to an **ASCO Revert Gas Recovery System**.

Standardly equipped without extruder plate.

Please refer to the options below.

Specifications

Production capacity:	750 kg/h (1'653 lb/h)
Voltage:	480 VAC \pm 5 %/60 Hz/3 Ph + PE (other voltages and frequencies on request)
Max power consumption:	19 kW (25.5 HP)
Dimension (L x W x H):	1'700 x 1'100 x 3'860 mm (67 x 44 x 152 in)
Weight net:	1'550 kg (3'410 lb) (without hydraulic oil & options) 1'800 kg (3'960 lb) (with hydraulic oil)
Weight packed:	2'250 kg (4'950 lb) (without hydraulic oil)
Ø consumption:	7.5 kW (10 HP)
Noise level P75i standard:	<79 dB(A)
CO ₂ inlet connection:	1 x 1/2" BSP female CO ₂ liquid 1 x 1/4" BSP female CO ₂ gas
CO ₂ source:	CO ₂ storage tank, liquid phase (15-20 bar) (218-290 psi)
Connectivity and remote access:	LAN, Ethernet, WiFi, 3G (other data services on demand)

ASCO Dry Ice Pelletizer P75i: Options

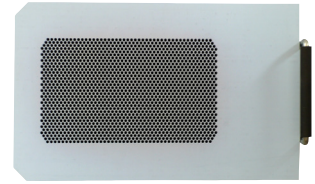
Pos. 001

Extruder plate for 3 mm (1/8 ") pellets

Extruder plate for ASCO Dry Ice Pelletizer P75i
For manual plate exchange

Pellets for **blasting purposes**

part no. 4045146



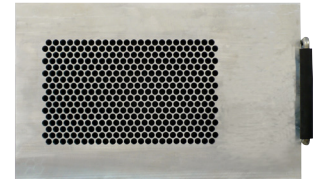
Pos. 002

Extruder plate for 6 mm (1/4 ") pellets

Extruder plate for ASCO Dry Ice Pelletizer P75i
For manual plate exchange

Pellets for **cooling purposes**

part no. 4045147



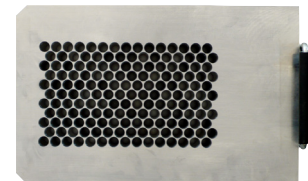
Pos. 003

Extruder plate for 10 mm (3/8 ") pellets

Extruder plate for ASCO Dry Ice Pelletizer P75i
For manual plate exchange

Pellets for **cooling purposes**

part no. 4045148



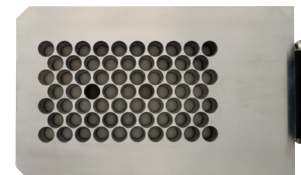
Pos. 004

Extruder plate for 16 mm (5/8 ") pellets

Extruder plate for ASCO Dry Ice Pelletizer P75i
For manual plate exchange

Pellets for **cooling purposes**

part no. 4045149



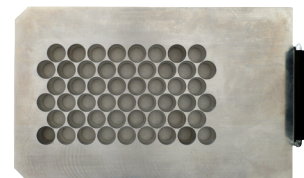
Pos. 005

Extruder plate for 19 mm (3/4 ") pellets

Extruder plate for ASCO Dry Ice Pelletizer P75i
For manual plate exchange

Pellets for **cooling purposes**

part no. 4045150



ASCO Dry Ice Pelletizer P75i: Automatic Pellet Size Changer

Pos. 006

Automatic pellet size changer for P75i

Option for automatic pellet size changeover between two determined diameters.

No extruder plates included. Please select the desired plates from the list of options.

part no. 4066383



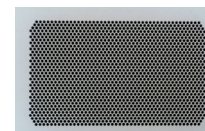
Pos. 007

Extruder plate for 3 mm (1/8 ") pellets

Extruder plate for ASCO Dry Ice Pelletizer P75i with automatic pellet size changer

Pellets for **blasting purposes**

part no. 4066385



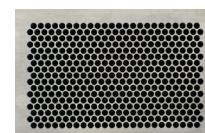
Pos. 008

Extruder plate for 6 mm (1/4 ") pellets

Extruder plate for ASCO Dry Ice Pelletizer P75i with automatic pellet size changer

Pellets for **cooling purposes**

part no. 4066458



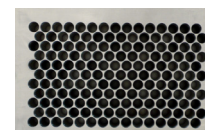
Pos. 09

Extruder plate for 10 mm (3/8 ") pellets

Extruder plate for ASCO Dry Ice Pelletizer P75i with automatic pellet size changer

Pellets for **cooling purposes**

part no. 4066459



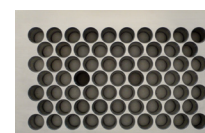
Pos. 010

Extruder plate for 16 mm (5/8 ") pellets

Extruder plate for ASCO Dry Ice Pelletizer P75i with automatic pellet size changer

Pellets for **cooling purposes**

part no. 4066386



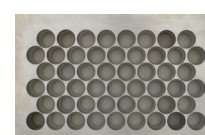
Pos. 011

Extruder plate for 19 mm (3/4 ") pellets

Extruder plate for ASCO Dry Ice Pelletizer P75i with automatic pellet size changer

Pellets for **cooling purposes**

part no. 4066460



ASCO Dry Ice Pelletizer P75i: Options

Pos. 012

ASCO Spare parts kit for P75i US

Includes a recommended selection of spare parts to ensure constant operation.

part no. 4066502



Sample image

Pos. 013

Exhaust pipe set 250 - 160

For discharging exhaust gas into the atmosphere.
Height approx. 300 cm / 100"

part no. 4045163



Sample image